



Cámara Chileno-Suiza de Comercio A.G., CCHSC, founded on July 14, 1955, by a group of 16 member firms. Today we have more than 100 active associates from Chile and Switzerland, with over 60 years of history, in a fast changing, highly dynamic, and expanding business world.

Our Mission:

Be a referent in services, by promoting and enabling business and trade between Chile and Switzerland, and by providing our clients a personalized attention according to the highest Swiss standards and values.

Objectives:

Being a non-profit business association, our aim is to encourage and increase trade between Chile and Switzerland, with a special focus on the common interests of our associates. This includes in particular:

- Encourage and enlighten Swiss business interests in Chile.
- Support Swiss investments in Chile.
- Assist firms in their setup and business activities in Chile.
- Facilitate contacts and networking within and outside our Chamber.



Our Strengths:

- Unique cluster of first-class member firms, a committed team, and a network of experts who know the local market and its particularities in depth.
- Excellent network of contacts in Chile and Switzerland.
- Close collaboration with Switzerland Global Enterprise, the Swiss Embassy in Chile, the Swiss community, governmental and non-governmental organizations, and other relevant institutions related to business and trade.
- Access to a dynamic market, with solid and stable institutions, which represents the ideal platform to start business in Latin America considering a future expansion to other countries, e.g. Peru, Colombia, Ecuador.
- Profound knowledge of intercultural characteristics and the work culture in Switzerland and Chile, personalized and tailor-made services in German, Spanish, English and French.



Services:

Besides our yearly program of activities, the Chamber also develops special projects and custom-made services for interested firms.

Regular Activities:

- Monthly **Lunches** (*Stammtische*) for networking or short presentations, which represent excellent platforms for a direct and personalized exchange with our associates.
- **Presentations** on issues of actuality in business or technology; **Events** for associates (Business Breakfasts, Debates, Networking Events, Road Shows, Business Matchmaking, etc.)
These events may be organized together with other chambers, in particular the European chambers, in order to enhance contacts and reach better synergies.
- Monthly **Newsletter** with information of interest, which represents a very direct communication channel for or towards our associates.

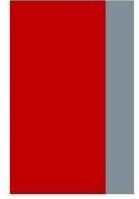
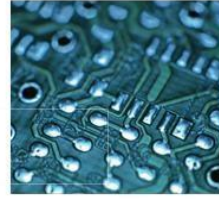
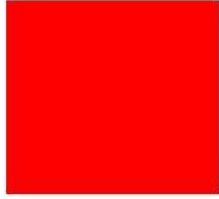
Special Projects:

- Organization of **Swiss Pavilions**: Expomin 2012, 2014, 2016, Exponor 2013 and Edifica in 2015. Also presence of a Swiss Lounges in events and fairs.
- In Alliance with **Switzerland Global Enterprise**, participation in trade fairs, market studies, business missions and delegations, contact with specialists of the Pool of Experts.

Tailor-Made Services:

- Implementation of work agendas; realization of business meetings with select counterparts from the private or public sector.
- Organization of events and seminars for associates.
- Translations and other back-up business services.
- Personalized and high-quality networking.

For any specific requirement, please contact us.



Corporate Information:

Cámara Chileno Suiza de Comercio A.G.

RUT: 71.290.700-2

Antonio Bellet 77, of. 104, Providencia, Santiago de Chile

Tel: +56 2 2244 1901, +56 9 6769 0987

www.swisschile.cl

Board of Directors:

Mr. Gonzalo Rojas, B-Aron Conseil, President

Mr. Juan Pablo Schaeffer, Vice-president

Mrs. Susana Torres, Endress + Hauser

Mr. Jerónimo Correa, Credit Suisse

Mr. Pablo Devoto, Nestlé

Mr. Marcelo González, Clariant

Mr. David Herranz, Adecco

Mr. Marcelo Schumacker, ABB

Mr. Max Spiess, Baraona Abogados

Ambassador Edgar Dörig, Honorary Member of the Board

Team:

Mrs. Veronika Fischer, General Manager

vfischer@camarachileno-suiza.cl

Mrs. Priscilla Brayson, Assistant

admin@camarachileno-suiza.cl

Associates of the Chamber:

As of July 2017

ABB S.A.	Juan Pablo Schaeffer Fabres
Acuña Silva Abogados	Kaizen Institute Consulting Group Chile
Adecco Recursos Humanos SA	Kuehne + Nagel Ltda.
ADM Planning Consultores Ltda.	Küpfer Hermanos S.A.
Ades SpA	Larraín Vial S.A.
Agencia de Aduanas Espinosa Ltda	Lilienfeld, Corredores de Seguros Ltda.
Alain Champion Arquitectura y Urbanismo EIRL	Lombardi Engineering
Albin Adam	Marti Chile S.A.
Amberg Technologies AG	Max Huber Reprotectica S.A.
Angelika Hucke Welkner	MCI Group Chile
APN SpA	Michel Iselin L.
Argor Heraeus	Mirta Yolanda Aguayo Muñoz
Ascensores Schindler (Chile) S.A.	Müller y Cía. Ltda.
Asesorías e inversiones Lindero Azul SpA	Nestlé Chile S.A.
Auraer SpA	Novartis Chile S.A.
Banco Security	Pablo Montecinos
Bank Julius Baer & Co. Ltd. Oficina de Representación	Panalpina Transportes Mundiales Ltda.
Baraona Marré Abogados Ltda	Pfenniger Herramientas Agrícolas S.A.
B-Aron Conseil Chile S.A.	Pfenniger S.A.
Barrios Muñoz Jeanneret y Cía	Pöyry Chile Ltda.
Barry Callebaut Chile SpA	Roberto Fuenzalida Bauer
BKS Stromschienen AG	Roche Chile Ltda.
BMG Avocats	RODAC S.A.
Chilena Consolidada Seguros Generales S.A.	Rodolfo Oberli
Clariant (Chile) Ltda.	Saverio Banchini
Clínica Dental Pérez Valenzuela	Sergio Otero
Club Suizo de Santiago	Servicios de Ingeniería y Tecnología Ltda (FRANKE)
Colegio Suizo de Santiago	SGS Chile Ltda.
Comercial Beiben SpA	SICPA Government Security Solutions LATAM
Comercial e Industrial ISESA S.A.	Sika S.A. Chile
Contactchile Gestiones Interculturales Ltda.	Sociedad Importadora Caminados Ltda. (UAV Sensefly)
Covel Abogados	Solexperts AG
Credit Suisse AG Oficina de Rep. En Chile	Sommer y Urrutia Ingeniería y Marketing Ltda.
Crown Worldwide Investments Ltda.	SwG Consult Ltda.
De la Maza y Cía Abogados Ltda.	Swiss International Airlines
Dielmann Services	SwissLife
Dismaco S.A.	Swisspresso SpA
Ditzler Ltda.	Syngenta S.A
Dreamlab Technologies Chile	Tandem Santiago
Egon Zehnder International Chile S.A.	Tritec Intervento SpA
Endress + Hauser Chile Ltda.	UBS A.G.
Ernst Basler + Partner Chile SpA	VDLBA Gruppe
Federico Prieto Schäffer Figueroa	Victor Cavada y Cía Ltda.
Fernando Rudolph	Victor Dagnino B.
Valenzuela y Cía Fracht Chile S.A.	Victorinox Andes S.A.
Fundes Chile SpA	Viola de Rodt
Geobrigg Andina S.A. Agencia en Chile	Wintec S.A.
Georg Fischer Rohrleitungssysteme AG	Woken Business Consulting
Geotest AG	Wolfgang Tauber K.
Glencore Chile S.A.	Wyssen Avalanche Control AG
Grupo Nueva	Xtremobility Ltda.
Hernán Büchi	Yalea Languages
Hilti Chile Ltda.	
ICS Business Consulting	
Importadora y Comercial Altea Ltda.	
Imprenta Editorial Grafic Suisse Ltda.	
Inmobiliaria Bretaña Ltda.	
Inversiones e Inmobiliaria Work Spot	
Instaplan S.A.	
Instituto Chileno Suizo de Idiomas y Cultura	